

PART OF THE SE.1/4, SEC. 29, T.7N., R.1E., S.L.B & M.
ABBEYON ESTATES NO. 2

IN WEBER COUNTY

SCALE 1" = 60'

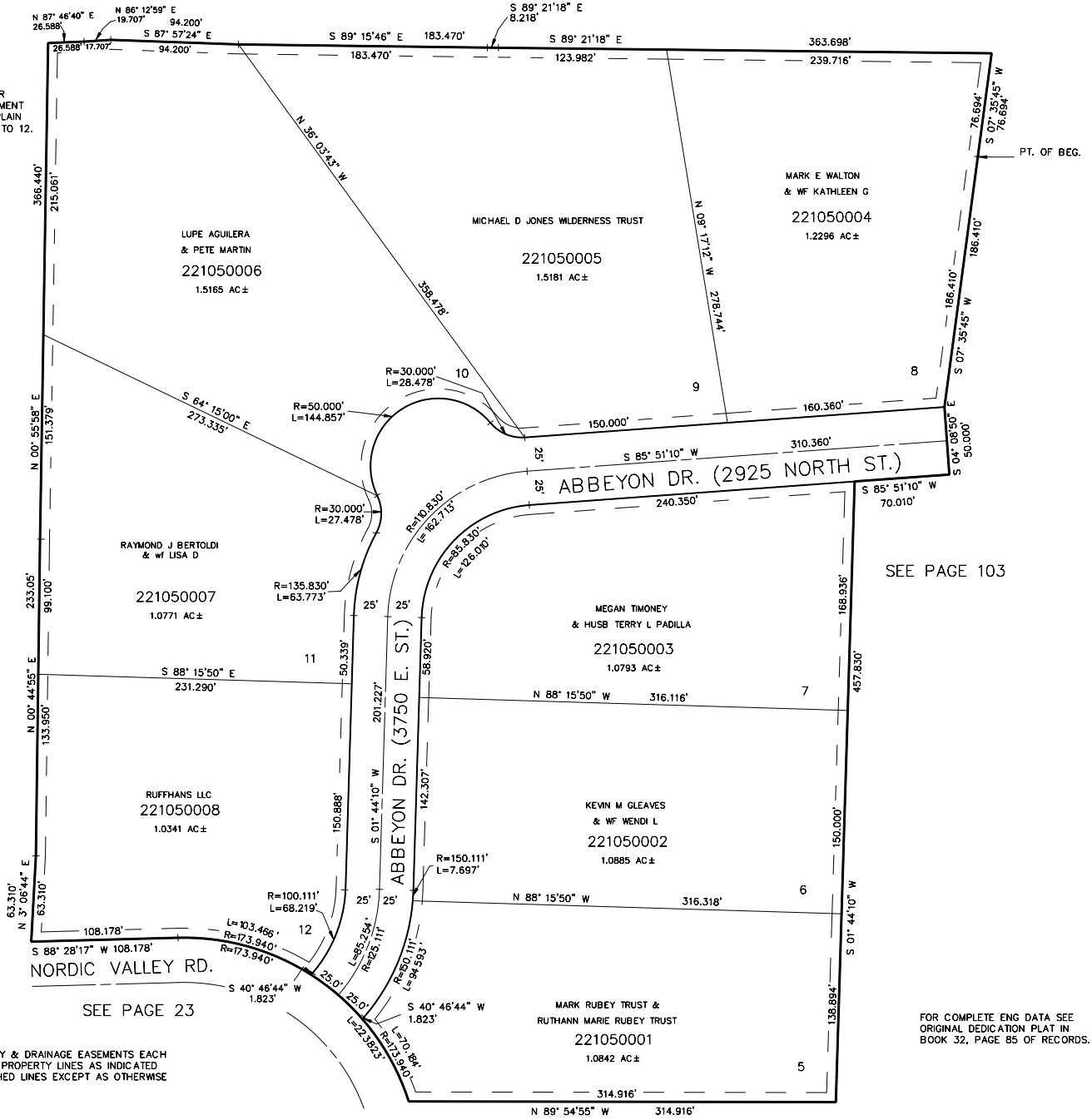
TAXING UNIT: 36

SEE PAGE 23

SEE DEDICATION PLAT FOR
NATURAL DRAINAGE EASEMENT
ON LOT 10, AND FLOOD PLAIN
INFORMATION ON LOTS 9 TO 12.

SEE PAGE 23

SEE PAGE 103



SEE PAGE 23

SEE PAGE 88

FOR COMPLETE ENG DATA SEE ORIGINAL DEDICATION PLAT IN BOOK 32, PAGE 85 OF RECORDS.